

## CALENDAR

### Newsletter Deadline

Sunday, **Nov. 15**

### Evening at the Williams Center

Saturday, **Nov. 21**, 8 pm  
Lafayette College

### Frozen Yogurt

Monday, **Nov. 30**, 5 – 9 pm  
Just A Dream Frozen Yogurt

### Holiday Blast

Sunday, **Dec. 13**, 4 – 8 pm  
Home of Joan Kicska

## IN THIS ISSUE

Presidents' Pens .....	2
AAUW District East Meeting.....	2
Holiday Blast .....	2
Notecard Fundraiser .....	2
Holiday Poinsettia Sale.....	3
Frozen Yogurt Fundraiser.....	3
Branch Meeting Minutes .....	4
Financial Report.....	4
Save the Dates.....	5
Notices.....	5
New Member Spotlights.....	6
Dr. Ann Keim .....	6
Interest Groups .....	7

**2015**

Mark your calendar!

## Evening at the Williams Center— The Cashore Marionettes

Saturday, November 21 at 8 pm

### Life in Motion



“Master puppeteer **Joseph Cashore** entrances audiences with astoundingly convincing creations, unmatched in artistry, grace, and refinement of movement. Through skillful design and virtuoso manipulation, the Cashore Marionettes come alive in scenes taken from everyday life that are humorous, poignant, and utterly fascinating. At 2 pm, *Simple Gifts* offers a poetic meditation on what it is to be human, a delightful family entertainment set to music by Beethoven, Vivaldi, Strauss, and Copland. At 8 pm, *Life in Motion* deepens the impact of Simple Gifts, a poetic meditation on what it is to be human, with additional vignettes of emotional gravity and insight. The vignettes are set to music by Beethoven, Vivaldi, Strauss and Copland.” Join us for what promises to be a compelling, unforgettable theatrical experience.

Please call Fran Kennedy for more information. Make your check for **\$20 per ticket payable to AAUW Easton Branch**.

Mail to Fran Kennedy, 718 Cattell Street, Easton, PA 18042

### Evening at the Williams Center

Name \_\_\_\_\_

Phone Number \_\_\_\_\_

No. of Tickets @ \$20 ea. \_\_\_\_\_

Total \_\_\_\_\_

**Check must be received by November 14.** \$4.00 from each ticket will go towards our AAUW Scholarship Fund.

## From the Presidents' Pens:



**November 3 is a very important date.**

Why? . . . because everyone who is over 21 and has registered to vote needs to formally express their choice, voice, approval, selection, preference in the direction our government and our elected leaders take this year and next in making the laws that affect every one of us.

*Fran & Nancy*

"In our age there is no such thing as 'keeping out of politics,' All issues are political issues."

*George Orwell*

## District East Meeting

October 3

A great location at Cedar Crest College and an outstanding speaker, Carol Tracy of the Women's Law Project made spending a fall day inside worth my time. Tracy spoke on Gender Equity. She covered issues women deal with in their lives ranging from low wages, poverty, sexual assault, education opportunities and how the Women's Law Project works to get our state government to respond to these issues.

The second session, led by Susan McNamara and Toni Hoffman, dealt with power mapping and building coalitions to develop a framework for problem solving through relationship building.

I came away from the conference looking at things a little bit differently and that was a good thing.

*Nancy Butow*

## Holiday Blast

**Sunday, December 13, 2015, 4 – 8 pm**

*It is almost time to celebrate the holidays with our Holiday Party.*

This is a time when we get to meet the "other half" of our members. Come by yourself or come with your spouse or partner and join the fun.

We hope to see you all there so we can say "**Happy Holidays**" in person. If you need a ride, please call Fran Kennedy or Nancy Butow.

Turkey and ham will be provided and we ask that you bring one of the following:

**A – E:** Drinks

**M-R:** Hors d'oeuvres

**F – L:** Sides or Salads

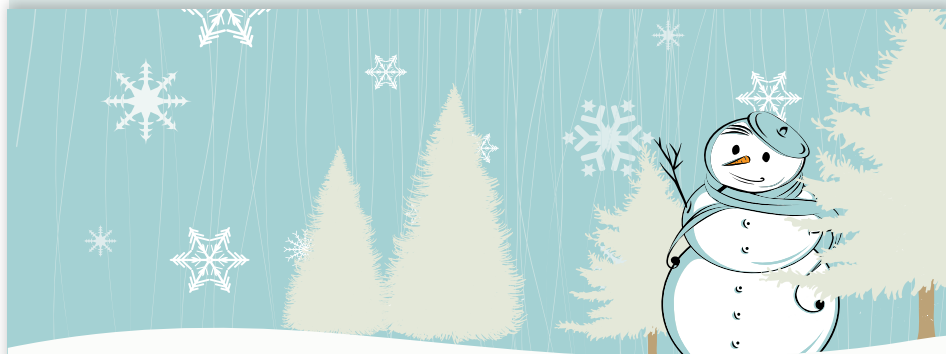
**S-Z:** Desserts

Please bring only white or rosé wine; **no red wine please.**

We look forward to seeing you at the party.

Directions to **2425 Norwood Avenue:**

From 248, turn on Park Avenue towards the Palmer Park Mall. Take the first right onto Woodlawn Avenue. Turn right onto Norwood Avenue. The house is on your right.



**RSVP by Dec. 7 to Joan Kicska at 610-252-7242 or [jkicska@aol.com](mailto:jkicska@aol.com)**

Do you have news to share with your fellow members?  
Do you have ideas for interest groups? Do you want to  
have more input into your newsletter?

**Submit your photos, articles and/or ads today to  
enhance your newsletter!**

## Holiday Poinsettia Sale

through December 8



all proceeds benefit  
AAUW Scholarship Fund

### HOLIDAY FUNDRIASER

As a holiday fundraiser, we are offering various sizes of poinsettias to our members, their family and friends.

This is a great way to **raise money for our Scholarship Fund** and bring the holiday spirit to you.

### PRICES

SIZE	COLOR	PRICE
4"	Single Bloom (Red, White, Pink)	\$ 4.25
6"	Multi Bloom (Red, White, Pink)	\$ 10
7.5"	(Red, White, Pink)	\$ 16

### ORDER FORM—AAUW POINSETTIAS

Mail this form with your payment.

NAME \_\_\_\_\_ PHONE NUMBER \_\_\_\_\_

ADDRESS \_\_\_\_\_

SIZE, COLOR QUANTITY PRICE

SIZE, COLOR QUANTITY PRICE

SIZE, COLOR QUANTITY PRICE

SIZE, COLOR QUANTITY PRICE

TOTAL ENCLOSED \$ \_\_\_\_\_

### PICK UP INFORMATION

Pick up between **5 and 7 pm** on **Tuesday, December 15** at **Just a Dream Frozen Yogurt**, Giant Shopping Center in Forks Township, 289 Town Center Blvd., Easton.

For those who do not drive, or have transportation problems, contact Janice for alternate arrangements. **Delivery will be available.**

### PAYMENT (must be received by December 8)

Mail Check (**Payable to AAUW Easton Branch**) and Order Form to:  
**Janice Lupackino** Phone: **610.751.9531**  
12 Monmouth Ct.  
Easton, PA 18040

Keep this for your records.

## Frozen Yogurt Fundraiser

Our next Frozen Yogurt gathering is on **Monday, Nov. 30** at **Just A Dream Frozen Yogurt** in Forks Township. This event has become a fun tradition for everyone. AND, *Just A Dream* donates 25% of sales (to our members, their families and friends) to our branch. All you need is the following coupon and an appetite for dessert! *Just a Dream Frozen Yogurt* is located in the **Giant Shopping Center** on **Sullivan Trail**.

*Looking forward to seeing you,  
your family and friends!*

**Frozen Yogurt Social**  
**Just a Dream Frozen Yogurt**  
**November 30 from 5 – 9 pm**

**Benefits AAUW Easton Branch**

## AAUW Easton Branch Meeting

**October 20, 2015, Palmer Library**

Fran Kennedy, Co-President, called the meeting to order at 7:05 pm.

There were eleven members and seven guests present.

Fran introduced Veronica Castro, our NCC Endowment Scholarship Recipient.

The minutes and the financial report were approved as printed in the newsletter.

Annette reported that the Book Fair grossed approximately \$4,800. This is slightly less than last year; however, we had fewer books this year. A wrap up meeting will be scheduled.

Evening at the Williams Center will be held on November 21. Tickets are \$20 with \$4 going to our branch. We have reserved 26 tickets. Reservation deadline is November 14. Send your reservations to Fran.

Fran announced that Marian will be coordinating an account with Amazon to sell books that we have appraised as having a higher value. Training was conducted with Judy Hahn.

Nancy Butow reported on the District Meeting held on October 3.

Fran reported that the Authors' Luncheon is scheduled for April 9 at the Pomfret Club. We are actively looking for potential sponsors and silent auction items.

Three members are needed for the Nominating Committee. We will be electing a new president. Two people can share an office.

Colleen Kuschke reported that the Holiday Poinsettia sale is in place. Flyers were distributed. They will also be on the website and in the newsletter.

Fran announced the following Upcoming Events:

- The last Monday of every month Just a Dream Frozen Yogurt will donate 25% of their proceeds to our branch. Notify them that you are with the AAUW Easton Branch when you purchase your yogurt. Time: 5 – 9 pm. Next Yogurt Social is Monday, October 26.
- Tuesday, October 27, Candidates Forums at Gracedale Nursing Home. 6:30 pm—County Controller candidates, 7:30 pm—County Council candidates.

## Financial Report November 1, 2015

	Budgeted Cost	Credits	Debits
<b>AAUW National</b>			
Dues	\$3,283.00	\$3,340.00	\$3,087.00
AAUW Funds	\$1,335.00		
<b>AAUW PA Dues</b>	\$680.00	\$740.00	\$680.00
<b>Banking</b>			
Fees	\$24.00		\$8.00
Interest		\$0.45	
<b>Conferences – 2016</b>	\$1,500.00		
<b>Fundraisers</b>			
Authors' Luncheon	\$1,000.00		
Book Fair	\$550.00	\$5,334.50	\$606.00
Notecards	\$400.00	\$305.00	
Poinsettias	\$280.00		
<b>Insurance</b>	\$332.00		
<b>Membership</b>			
Dues 15/16	\$680.00	\$740.00	
Donations		\$82	
Expenses	\$75.00		
<b>Newsletter</b>	\$250.00		
Advertisements			
<b>Officers' Expenses</b>			
Membership	\$50.00		
President	\$50.00		
Treasurer	\$50.00		
<b>Postal Expenses</b>			
Box	\$82.00		\$82.00
Postage	\$50.00		
<b>Programs</b>			
Gateway to Equity	\$100.00		
Get Out the Vote	\$50.00		
Holiday party	\$100.00		
Meeting Rooms	\$250.00		
September Hospitality	\$50.00	\$90	\$63.75
Scholarship Dessert	\$50.00		
Speakers' Gifts	\$100.00		
<b>Publicity</b>	\$75.00		
<b>Scholarships</b>	\$4,500.00		

*continued on page 5*



## Branch Meeting *continued from page 4*

- Thursday, October 29—Candidate Forum at Northampton County Courthouse, 7 pm for Judge Candidates for Court of Common Pleas.
- Wednesday, November 4 at 6 pm—Authors' Luncheon meeting at the home of Karen Hickey
- Friday, November 6, 7 pm at the Holiday Inn Express—Night at the Races to benefit the Easton Area Neighborhood Center.
- Sunday, December 13—Holiday Party at the home of Joan Kicska from 4 – 8 pm.
- Saturday, February 6, 1 pm—Sigal Museum “Here Come the Brides.”

The business meeting was adjourned at 7:25 pm.

Nancy introduced our Speaker, Howard McGinn. Howard presented his slides and spoke about Cuba.

*Respectfully submitted, Rosemary Baker*



*Howard setting up his slides show.*



*Left to right: Fran, Veronica Castro (scholarship recipient) and Nancy Butow.*



## Save the Dates

### Branch Meeting

**Saturday, February 6, 1 pm**

Sigal Museum “Here Come the Brides”

### Interbranch Luncheon

**Saturday, March 12, 2016**

Best Western Hotel, Bethlehem

Gloria Blackwell, National VP of Fellowships, Grants, and Global Programs

**Registration:** 11:30 am, **Lunch:** 12 noon

### Authors' Luncheon

**Saturday, April 9, 2016**

Pomfret Club, Easton

(We are still looking for recommendations of prospective businesses and individual sponsorships. Call Terry Thomas or Janice Lupackino).

## Notices

### Regarding the Newsletter

If any member has information that she wishes to have published in the newsletter, please e-mail the information to **Fran Kennedy** or **Nancy Butow**. This would include births, deaths, marriages, happenings at cultural institutions, photos of events and anything that you think may be of interest to other members. **Submissions must be in by the 15<sup>th</sup>** of the current month to be included in the following month's newsletter.

### Newsletter Ads

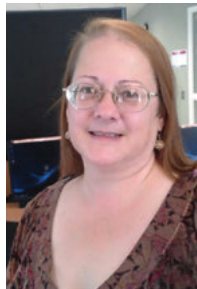
*Do you have a business or service that you would like to promote?* The charge for including an ad is only **\$5 for each issue**. They should be no larger than business card size and they must come from members. Payment for ads should be made to Colleen Kuschke and she will notify the newsletter editor that the ad is ready to be placed. If you need help with the ad, contact Suzi Campbell.

### Newsletter Costs

The branch dues of \$10 per year does not cover the cost of printing and mailing the newsletter. As officers of the branch, your board is concerned with the rising cost of printing and postage and what it does to our bottom line. If you have computer access, please consider receiving our newsletter via email. *It saves the branch money and trees!*

## New Member Spotlights

### Bridget Naylor



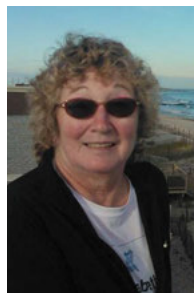
The Easton Branch welcomes Bridget Naylor as a new member this month. Bridget and her partner Terry, have already put in many hours volunteering at the Book Fair. This service is representative of the many talents Bridget has to offer to our branch. She is currently employed as an Adjunct Professor at Lehigh Carbon Community College (LCCC) teaching English, public speaking, literature

and technical writing. Bridget moved back to Easton from Buffalo, New York in 1984. Having been born in Easton but not raised here, she nevertheless has deep family roots in the area. Her mother, Kathleen Storm, graduated as valedictorian from Easton High School in 1956, and her grandfather, John J. Storm, served as an Easton police sergeant for 25 years. Bridget holds two masters degrees, the first from SUNY at Buffalo in Mass Communications and the second from Kutztown University in Secondary English Education. In addition to her work at LCCC, Bridget enjoys volunteering as a Speech and Debate Judge for area high school and college-level competitions and work as coach over the past 5 years for the Notre Dame Speech and Debate team.

Bridget has great commitment to her work with her students and enjoys influencing the lives of her students in a positive way. One of her great rewards is running into her students years later and hearing, "Hey, you were my English teacher!" The fact that they still remember me and tell me how much they enjoyed my classes surely indicates to me that I must be making some kind of an impact on their lives. That kind of thing is what makes teaching such a noble and worthwhile profession."

Bridget has joined us as she is very much in favor of promoting Women's access to higher education. We welcome Bridget to our branch and look forward to her contributions based on her many assets!

### Liz Toler



The Easton branch welcomes Liz Toler as a new member. Liz resides on Firethorne Drive and has lived in Easton since 1981. She is employed by Bethlehem Township Community Center & Forensic Engineering Sciences Inc. She has a BA degree from Jersey City State College focused on Special Education/Early Childhood. Liz enjoys both cycling and walking in her spare time. We

welcome Liz and hope to meet her in person at upcoming branch events.

*Nancy Berry*

## Congratulations to Dr. Ann Keim on receipt of her Honorary Life Membership Certificate



The certificate describes "a strong commitment to education and equity for women and girls through 50 years of membership in the American Association of University Women and entitles Ann to a well-deserved lifetime membership. The latter description truly describes Ann in her service commitment to the Easton branch. Ann joined the Easton Branch in 1966 and has served in many different

positions in the branch, including: Recording Secretary, 1967 – 69; 1st Vice-President, 1969 – 1971; President 1972 – 1974; PA Division 1st V.P. 1977 – 78; PA Division President 1978 – 1980; Area Consultant 1980 – 1982; Branch President 1981 – 1982.

Although Ann spends most of her time in Lancaster now, we want to extend both our gratitude and congratulations and hope that she can join us at one of our upcoming events so we can extend our congratulations and good wishes in person.

*Respectfully submitted  
Co-Vice President Membership, Nancy Berry.*

Imagine  
your business card  
being here!

## Interest Groups

The Easton Branch has several interest groups created to stimulate discussions, encourage networking and support the community. If you have ideas for additional groups, let us know. Every group looks forward to new participants. Call if you are interested in joining a group.

### Book Discussion

**Chair:** Toni Hoffman—Third Monday of month

Date: **November 16**

Hostess: **Martha Barnett**

Book: **The Orphan Train**

by *Christina Baker Kline*.



### Timely Topics

**Chair:** TBD



Members meet at individual members' homes to discuss topics of interest.

### Diversity: Deeds and Dialogue

**Chair:** Rosemary Baker

Date: **December 2**

Hostess: **Rosemary Baker**



### Tuesday Evening Bridge Group

**Chair:** Rosemary Baker—Tuesday evenings

Call **Rosemary** for more information.



### Photography Group

**Chair:** Janice Lupackino

Date: **Monday, November 16**

Time: **3:30 pm**

Hostess: **Toni Hoffman**



### Travel Group

**Chair:** Becky Goldenberg

Information TBA



### Out to Lunch

**Chair:** TBD—First Wednesday of the month

Nothing scheduled at this time.



### Rotating Gourmet

**Chair:** Lois Wildrick

Fall gathering quote:

"The recipes were yummy, and we had 25 here. Everyone seemed to have a good time." *Lois*



### Tapas

**Chair:** TBD—Quarterly



### Mah Jongg

**Chair:** Toni Hoffman—2nd and 4th Mondays at 10:30



### International Relations

**Chair:** Jean Riker

Date: **November 22**

Time: **1:30 pm**

Hostess: **Janet Rosenthal**

Topic: **World Court**



# American Association of University Women

<b>AAUW National</b>	<b>800.326.2289</b>	<b><a href="http://www.aauw.org">www.aauw.org</a></b>
<b>Easton Branch</b>		<b><a href="http://easton-pa.aauw.net">easton-pa.aauw.net</a></b>
<b>Co-Presidents</b>	<b>Nancy Butow, Fran Kennedy</b>	<b><a href="http://easton-pa.aauw.net/contact/">easton-pa.aauw.net/contact/</a></b>
<b>Membership Co-Chairs</b>	<b>Nancy Berry, Annette Stooddy</b>	<b><a href="http://easton-pa.aauw.net/membership/">easton-pa.aauw.net/membership/</a></b>
<b>Easton Edition</b>	<b>Suzi Campbell</b>	<b><a href="http://easton-pa.aauw.net/contact/">easton-pa.aauw.net/contact/</a></b>

AAUW advances equity for women and girls through advocacy, education, philanthropy, and research.

In principle and in practice, AAUW values and seeks a diverse membership. There shall be no barriers to members to full participation in this organization on the basis of gender, race, creed, age, sexual orientation, national orientation, disability, or class.

The AAUW Funds include the Educational Opportunities Funds (formerly a part of the AAUW Educational Foundation) which help us to advance equity for women and girls through programs such as American and International fellowships, and Community Action grants.

AAUW Funds also include the Legal Advocacy Fund which provides funding and a support system for women seeking judicial redress for sexual discrimination, the Leadership Programs Fund (formerly the AAUW Leadership and Training Institute), the Eleanor Roosevelt Fund, and the Public Policy Fund.



**ADDRESS SERVICE REQUESTED**

**Easton,  
Pennsylvania  
Branch**  
P.O. Box 1464  
Easton, PA  
18044-1464  
Advances equity for  
women and girls